

ArcPad 48 RGBCW™



The ArcPad 48 is designed for the generation of rich, saturated colours and colour changing effects in wall washing and spot lighting for architectural applications. The ArcPad 48 is a durable and robust fixture with a projected lifespan in excess of 60000 hrs. The base is made from cast aluminium and is ideal for floor or wall mounting via 2 fixing holes. The extruded head, which the LED matrix and lenses are fitted can be tilted to suit different applications: pan +45° / -45°, tilt +60° / -90°.

TECHNICAL SPECIFICATIONS:

Power Supply Required: See Below Listing
 Max Power Consumption: 60W
 Available Beam Angles: See Pg 7
 Impact Rating: IK 06
 Ingress Protection Rating: IP67
 Light Source: High Power LED's
 LED Life Expectancy: Min 85000 Hrs
 Typical Lumen Maintenance: 70% @ 85000 hrs

Construction: Cast / Extruded Aluminium
 Fixing Method: Integral Mounting Bracket
 Product Weight: 1,8kg
 Operating Ambient Temp Range: -20°C/+40°C
 Operating Temp: +70°C @ Ambient +40°C
 LED Colour Variants: See Pg 7
 Cooling System: Convection
 Cable Type: Chogori 08BMMA-SL8001 (Male)

For further information regarding optical systems please visit the website: www.anolis.eu

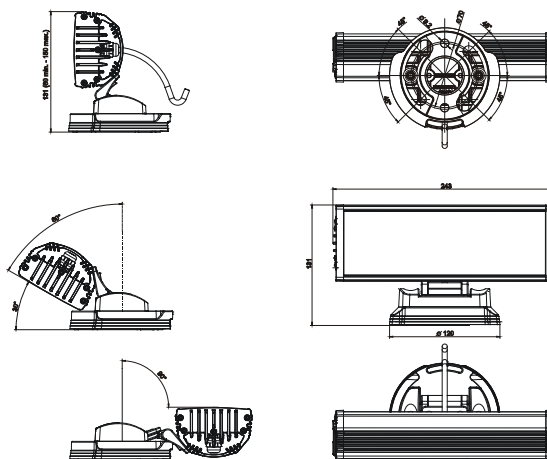
Accessories:

Barndoors
 Eggcrate top hat module

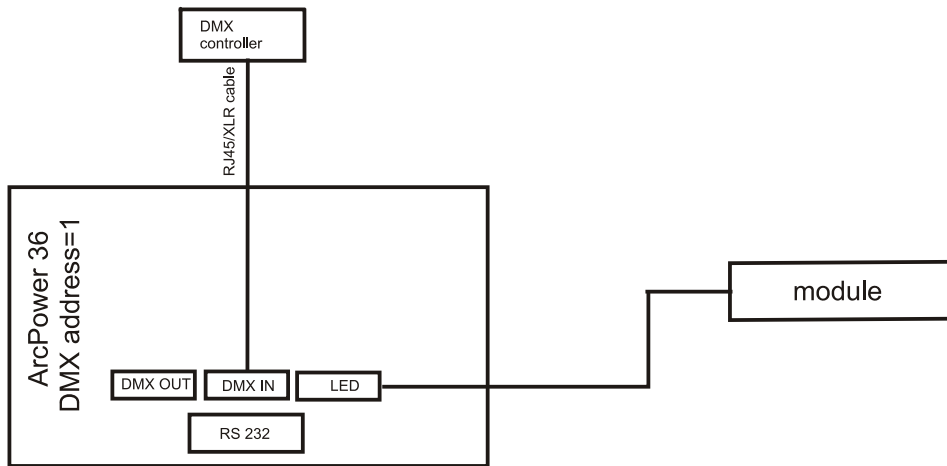
Compatible Drivers:

ArcPower 48

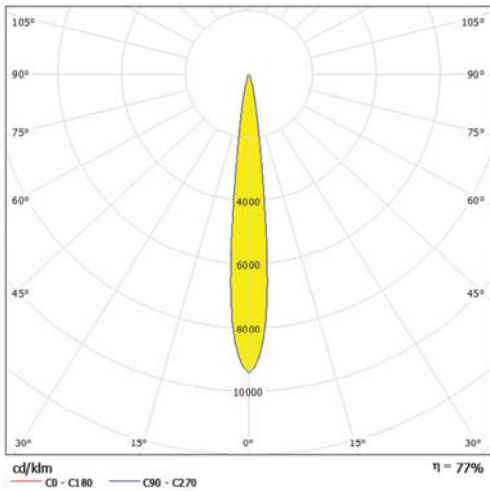
DIMENSIONAL DRAWINGS:



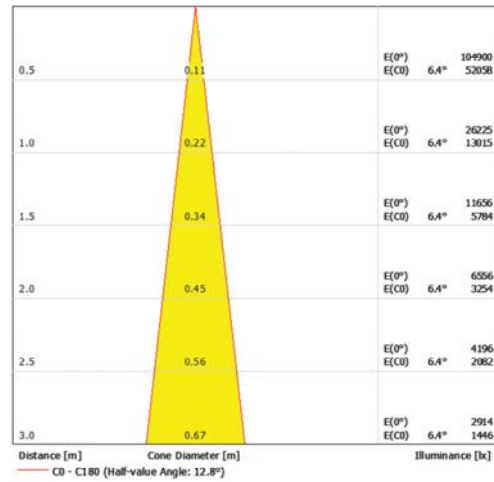
CONNECTION SCHEME:



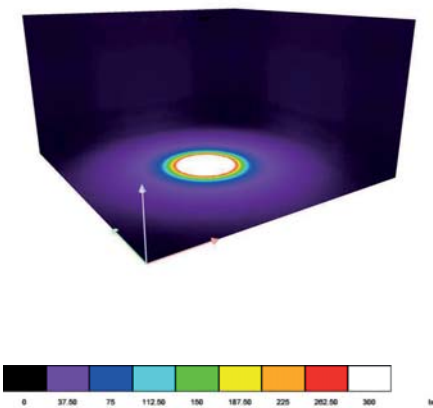
LDC Polar



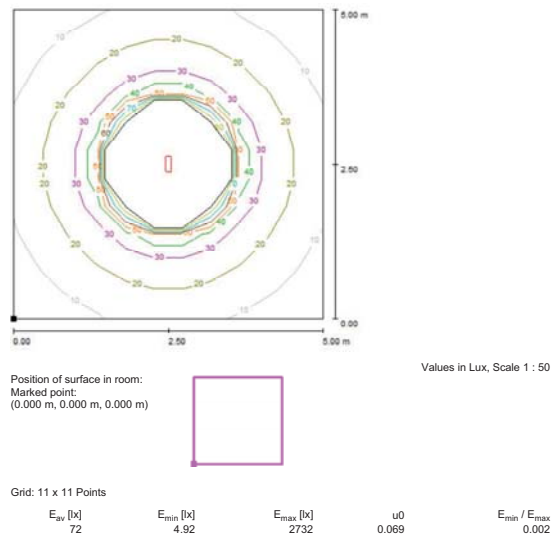
Cone Diagram



Colour Rendering



Floor Isolines (E)



Room Details

Height of working plane: 0.850 m
 Boundary Zone: 0.000 m

Maintenance factor: 0.80

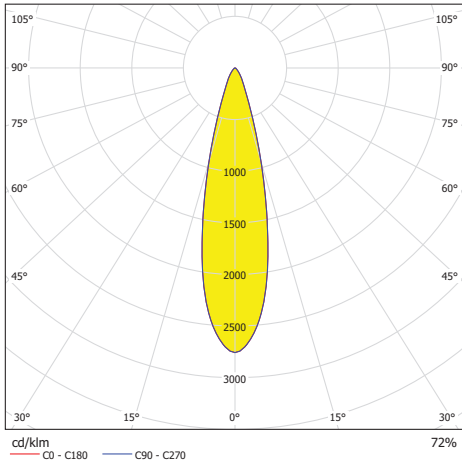
Height of Room: 2.800 m
 Ground area: 25.00 m²



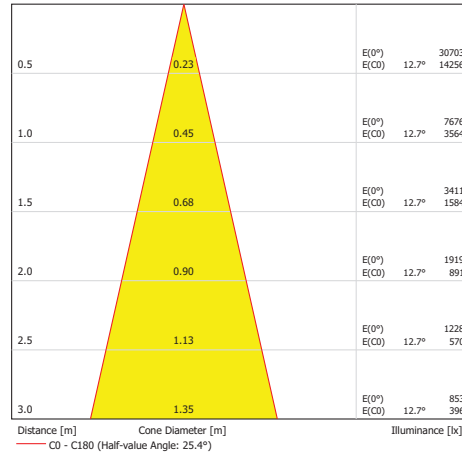
Total Luminous Flux: 2784 lm
 Total Load: 48.0 W
 Maintenance factor: 0.80
 Boundary Zone: 0.000 m

Surface	Rho [%]	from ([m] [m])	towards ([m] [m])	Length [m]
Floor	20	/	/	/
Ceiling	70	/	/	/
Wall 1	50	(0.000 0.000)	(5.000 0.000)	5.000
Wall 2	50	(5.000 0.000)	(5.000 5.000)	5.000
Wall 3	50	(5.000 5.000)	(0.000 5.000)	5.000
Wall 4	50	(0.000 5.000)	(0.000 0.000)	5.000

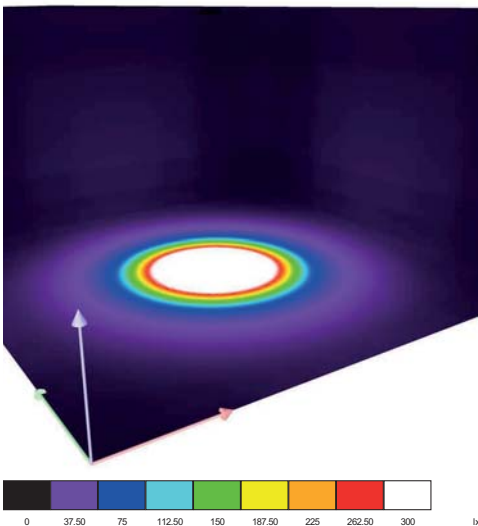
LDC Polar



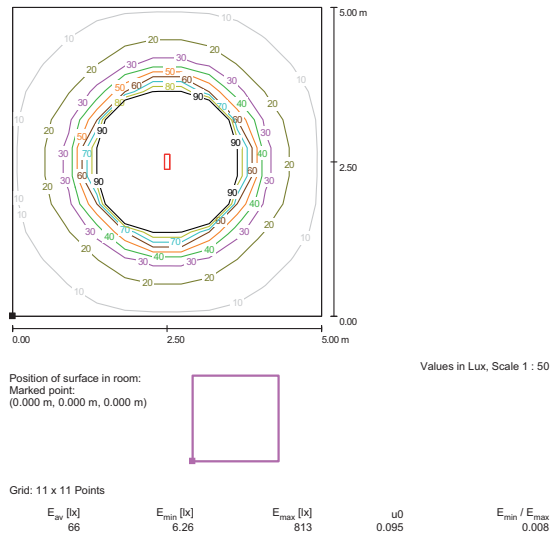
Cone Diagram



Colour Rendering

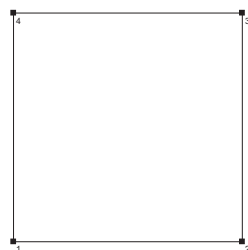


Floor Isolines (E)



Room Details

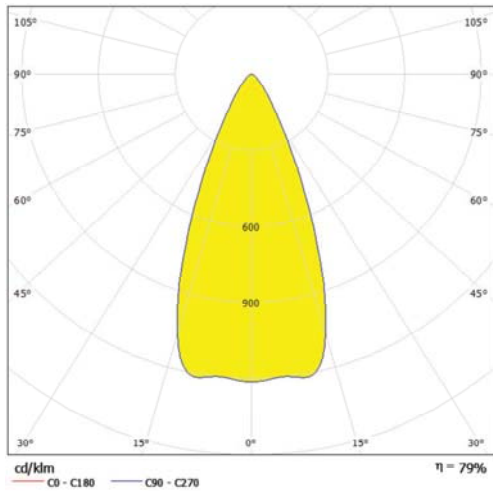
Height of working plane: 0.850 m
 Boundary Zone: 0.000 m
 Maintenance factor: 0.80
 Height of Room: 2.800 m
 Ground area: 25.00 m²



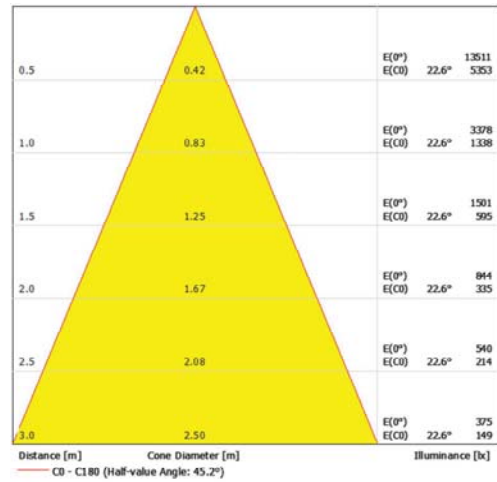
Total Luminous Flux: 2784 lm
 Total Load: 48.0 W
 Maintenance factor: 0.80
 Boundary Zone: 0.000 m

Surface	Rho [%]	from ([m] [m])	towards ([m] [m])	Length [m]
Floor	20	/	/	/
Ceiling	70	/	/	/
Wall 1	50	(0.000 0.000)	(5.000 0.000)	5.000
Wall 2	50	(5.000 0.000)	(5.000 5.000)	5.000
Wall 3	50	(5.000 5.000)	(0.000 5.000)	5.000
Wall 4	50	(0.000 5.000)	(0.000 0.000)	5.000

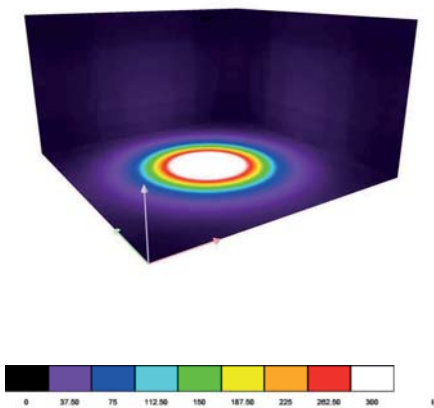
LDC Polar



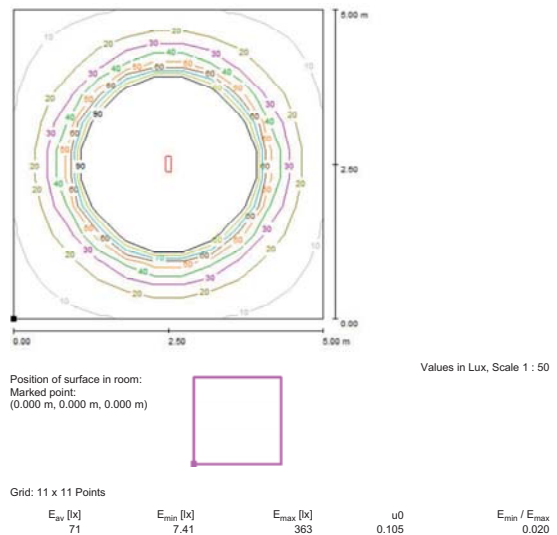
Cone Diagram



Colour Rendering



Floor Isolines (E)

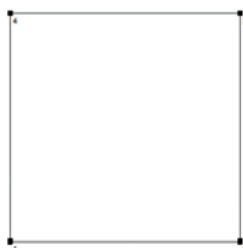


Room Details

Height of working plane: 0.850 m
 Boundary Zone: 0.000 m

Maintenance factor: 0.80

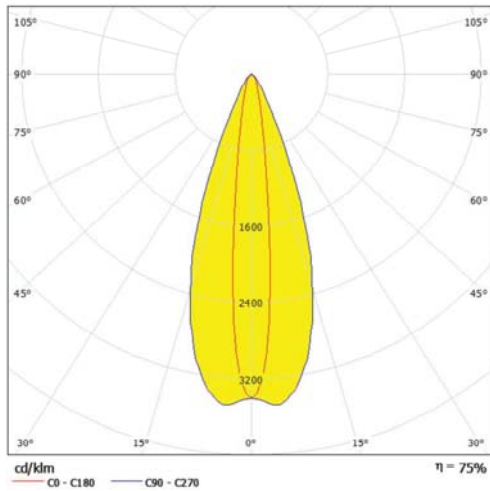
Height of Room: 2.800 m
 Ground area: 25.00 m²



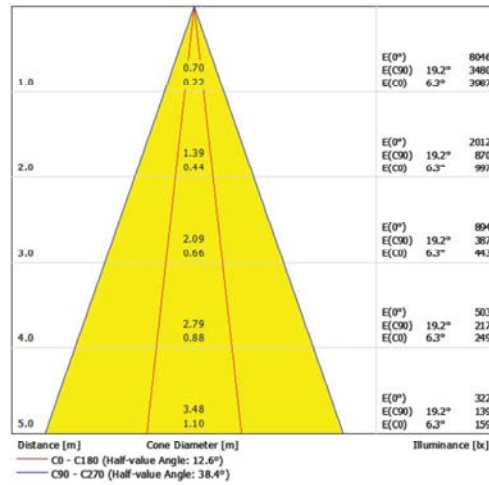
Total Luminous Flux: 2784 lm
 Total Load: 48.0 W
 Maintenance factor: 0.80
 Boundary Zone: 0.000 m

Surface	Rho [%]	from ([m] [m])	towards ([m] [m])	Length [m]
Floor	20	/	/	/
Ceiling	70	/	/	/
Wall 1	50	(0.000 0.000)	(5.000 0.000)	5.000
Wall 2	50	(5.000 0.000)	(5.000 5.000)	5.000
Wall 3	50	(5.000 5.000)	(0.000 5.000)	5.000
Wall 4	50	(0.000 5.000)	(0.000 0.000)	5.000

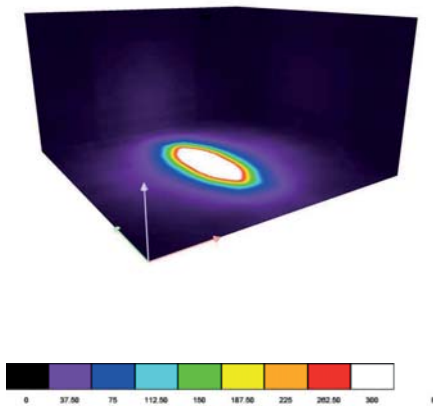
LDC Polar



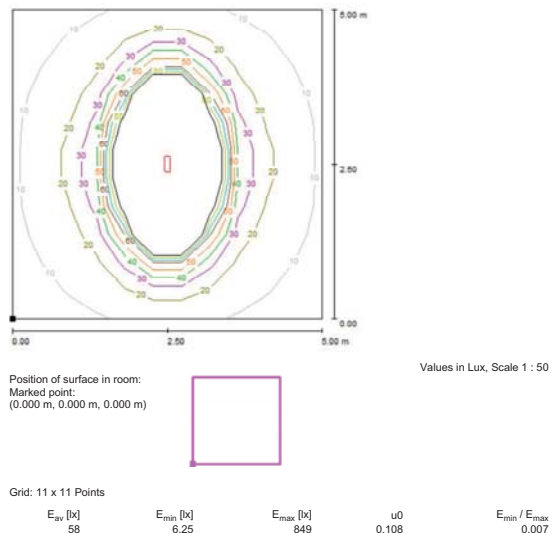
Cone Diagram



Colour Rendering



Floor Isolines (E)



Room Details

Height of working plane: 0.850 m
 Boundary Zone: 0.000 m
 Maintenance factor: 0.80
 Height of Room: 2.800 m
 Ground area: 25.00 m²



Total Luminous Flux: 2364 lm
 Total Load: 49.0 W
 Maintenance factor: 0.80
 Boundary Zone: 0.000 m

Surface	Rho [%]	from ([m] [m])	towards ([m] [m])	Length [m]
Floor	20	/	/	/
Ceiling	70	/	/	/
Wall 1	50	(0.000 0.000)	(5.000 0.000)	5.000
Wall 2	50	(5.000 0.000)	(5.000 5.000)	5.000
Wall 3	50	(5.000 5.000)	(0.000 5.000)	5.000
Wall 4	50	(0.000 5.000)	(0.000 0.000)	5.000

PRODUCT SPECIFICATION CHART:

1006 1987	AWWWWA	26°
1006 2004	BCW	45°
1006 5976	CW	13°
1006 0972	CW	26°
1006 0976	CW	45°
1006 0980	CW	13°x38°
1006 1959	RBACW	13°x38°
1006 1961	RGBCW	13°
1006 5979	RGBCW	13°
1006 0971	RGBCW	26°
1006 0975	RGBCW	45°
1006 0979	RGBCW	13°x38°
1006 1982	RGBWW	13°
1006 5980	RGBWW	13°
1006 5973	RGBWW	26°
1006 5974	RGBWW	45°
1006 5975	RGBWW	13°x38°
1006 5977	SW	13°
1006 0973	SW	26°
1006 0977	SW	45°
1006 5971	SW	13°x38°
1006 5978	WW	13°
1006 0974	WW	26°
1006 0978	WW	45°
1006 5972	WW	13°x38°
1006 1960	WWAWWR	45°

ACCESSORIES:

1006 2016	Accessories Pack
1098 0090	Barn Door Module

Other variants available on request