

# ArcPad Xtreme RGBCW™



ArcPad Xtreme is an LED outdoor fixture, LED's are densely populated producing a high light output. ArcPad Xtreme is an ideal fixture to illuminate tall buildings and structures. The LED configuration delivers stunning light quality not seen in other competitive products on the market.

## TECHNICAL SPECIFICATIONS:

Power Supply Required: 100-240V AC 50/60Hz  
 Max Power Consumption: 580W  
 Available Beam Angles: See Pg 7  
 Impact Rating: IK 06  
 Ingress Protection Rating: IP67  
 Light Source: High Power LED's  
 LED Life Expectancy: Min 77000 Hrs  
 Typical Lumen Maintenance: 70% @ 77000 hrs  
 Construction: Cast Aluminium

Fixing Method: StIRRup  
 Product Weight: 57kg  
 Operating Ambient Temp Range: -20°C/+40°C  
 Operating Temp: +85°C @ Ambient +40°C  
 LED Colour Variants: See Pg 7  
 Cooling System: Convection  
 Cable: Combined Power / Data (See Manual)  
 Chogori 08BMMA-SL8001 (Male)  
 Wireless Version Available: CRMX Technology Lumen Radio

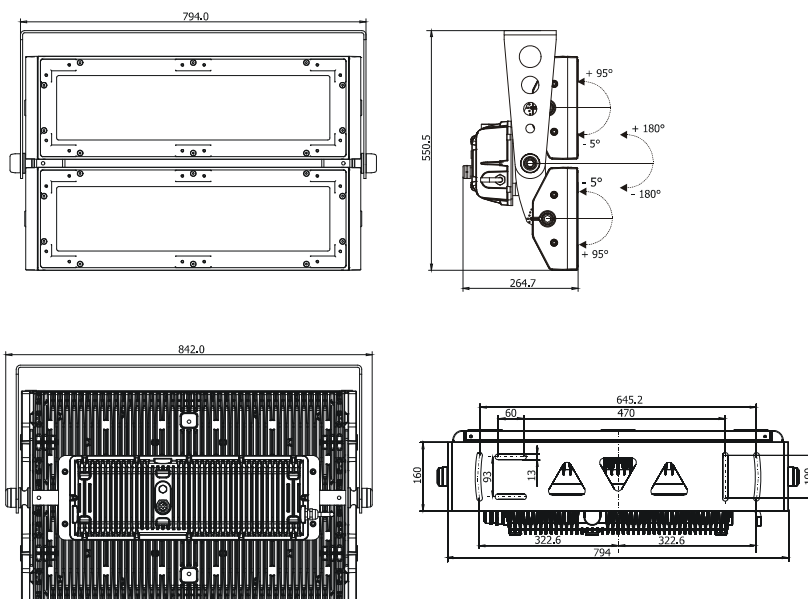
For further information regarding optical systems please visit the website: [www.anolis.eu](http://www.anolis.eu)

## Accessories:

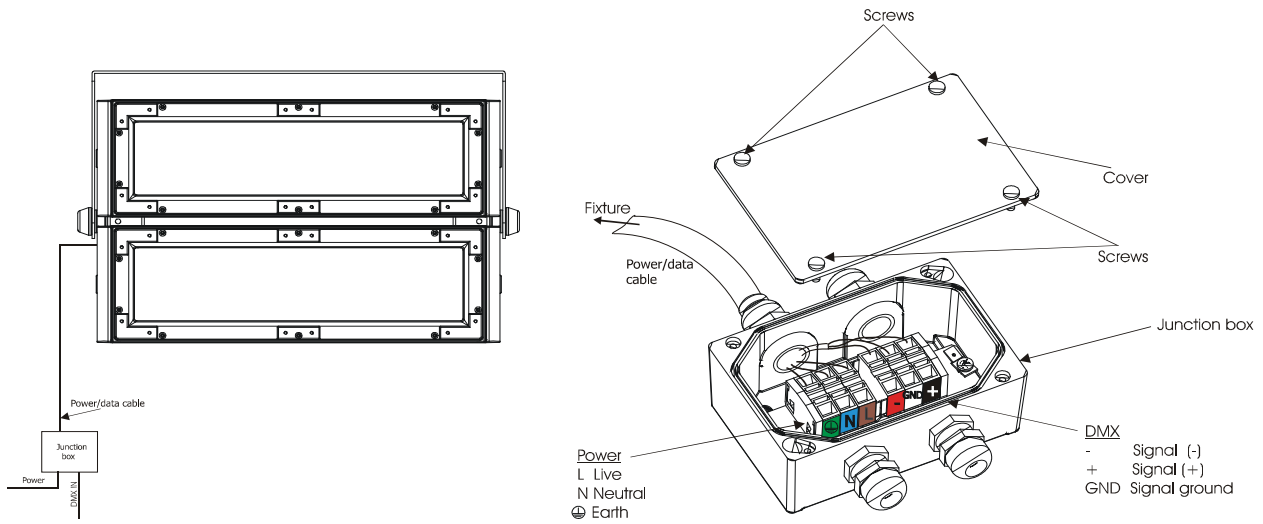
Barndoors  
 Top Hat, Half Top

## Compatible Drivers:

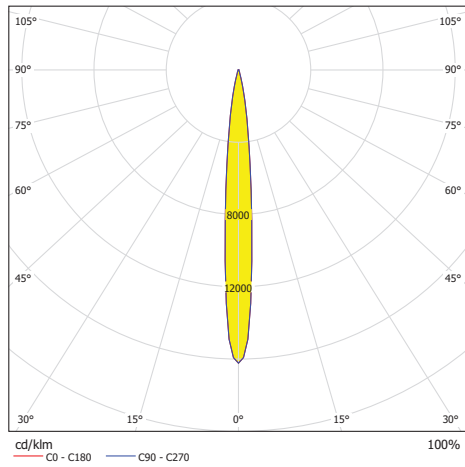
## DIMENSIONAL DRAWINGS:



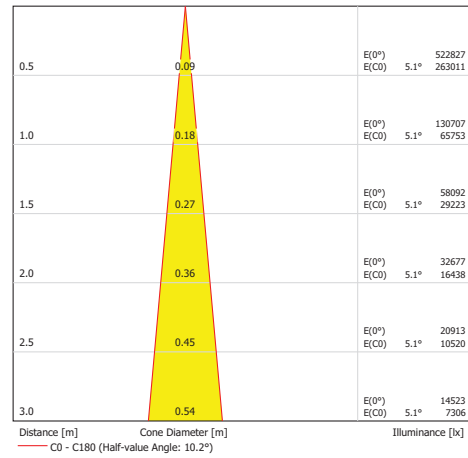
CONNECTION SCHEME:



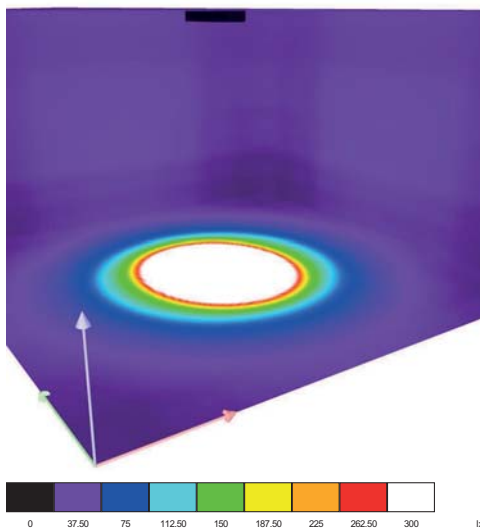
### LDC Polar



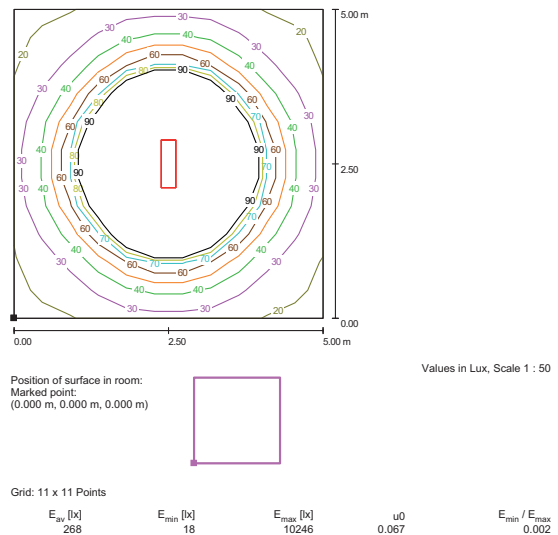
### Cone Diagram



### Colour Rendering



### Floor Isolines (E)

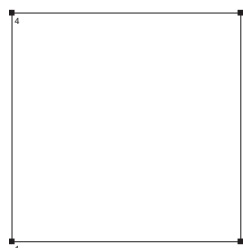


### Room Details

Height of working plane: 0.850 m  
 Boundary Zone: 0.000 m

Maintenance factor: 0.80

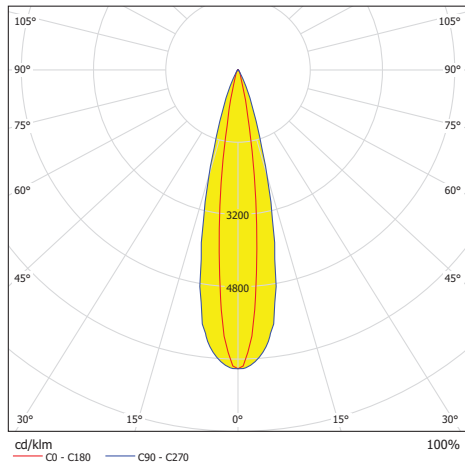
Height of Room: 2.800 m  
 Ground area: 25.00 m<sup>2</sup>



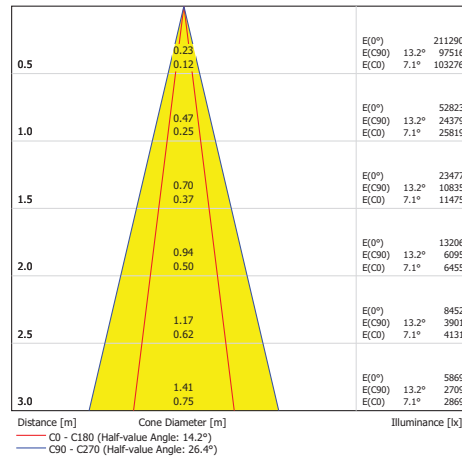
Total Luminous Flux: 8054 lm  
 Total Load: 263.0 W  
 Maintenance factor: 0.80  
 Boundary Zone: 0.000 m

Surface	Rho [%]	from ( [m]   [m] )	towards ( [m]   [m] )	Length [m]
Floor	20	/	/	/
Ceiling	70	/	/	/
Wall 1	50	( 0.000   0.000 )	( 5.000   0.000 )	5.000
Wall 2	50	( 5.000   0.000 )	( 5.000   5.000 )	5.000
Wall 3	50	( 5.000   5.000 )	( 0.000   5.000 )	5.000
Wall 4	50	( 0.000   5.000 )	( 0.000   0.000 )	5.000

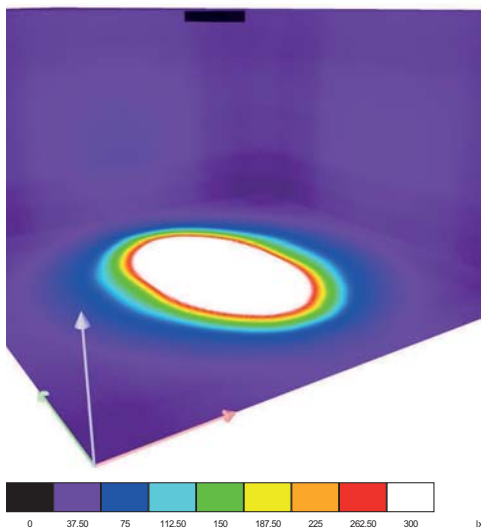
LDC Polar



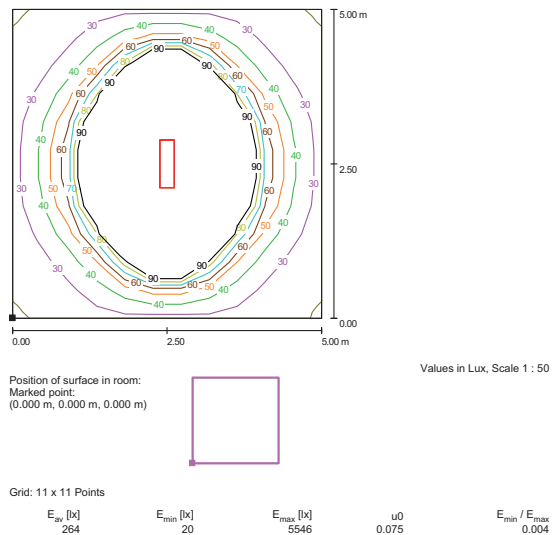
Cone Diagram



Colour Rendering



Floor Isolines (E)

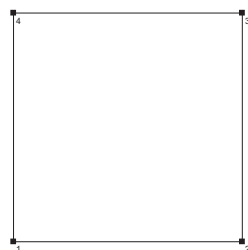


Room Details

Height of working plane: 0.850 m  
Boundary Zone: 0.000 m

Maintenance factor: 0.80

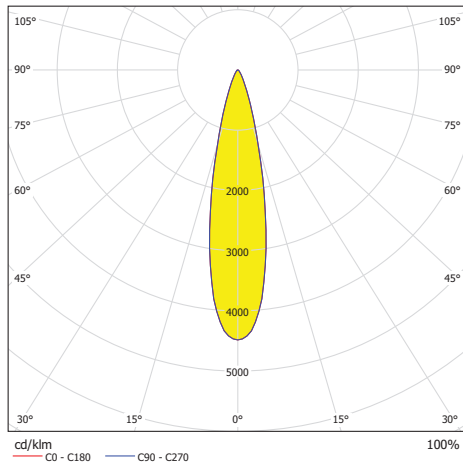
Height of Room: 2.800 m  
Ground area: 25.00 m<sup>2</sup>



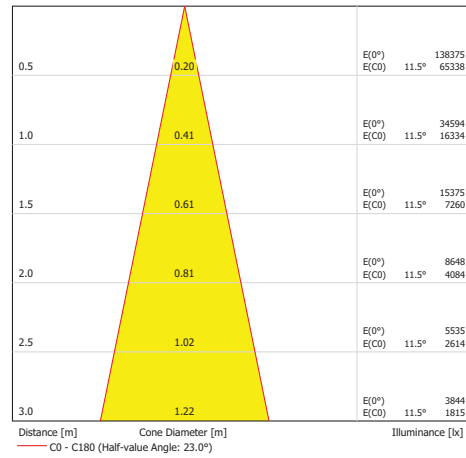
Total Luminous Flux: 7986 lm  
Total Load: 263.0 W  
Maintenance factor: 0.80  
Boundary Zone: 0.000 m

Surface	Rho [%]	from ( [m]   [m] )	towards ( [m]   [m] )	Length [m]
Floor	20	/	/	/
Ceiling	70	/	/	/
Wall 1	50	( 0.000   0.000 )	( 5.000   0.000 )	5.000
Wall 2	50	( 5.000   0.000 )	( 5.000   5.000 )	5.000
Wall 3	50	( 5.000   5.000 )	( 0.000   5.000 )	5.000
Wall 4	50	( 0.000   5.000 )	( 0.000   0.000 )	5.000

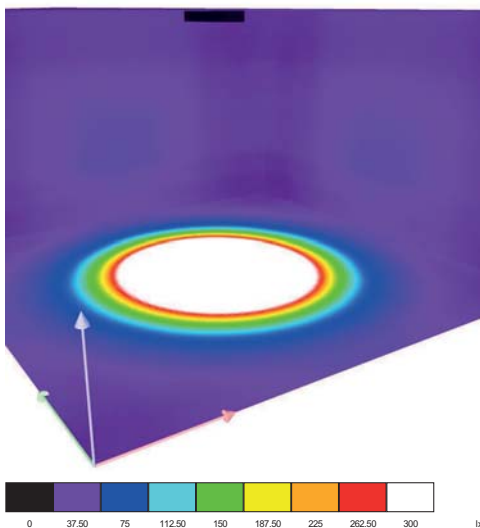
LDC Polar



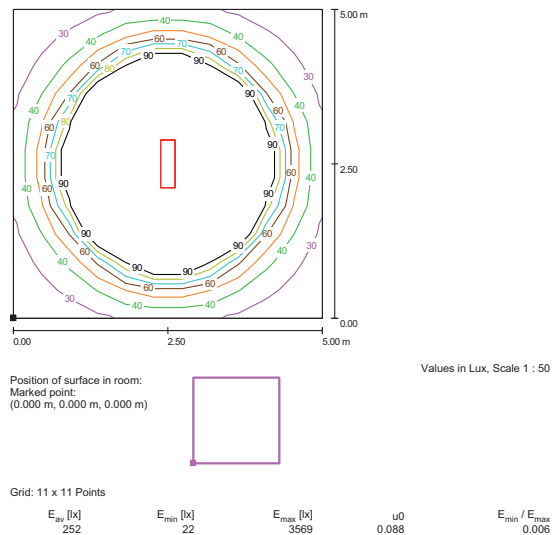
Cone Diagram



Colour Rendering



Floor Isolines (E)

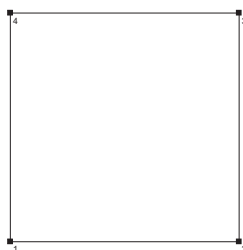


Room Details

Height of working plane: 0.850 m  
 Boundary Zone: 0.000 m

Maintenance factor: 0.80

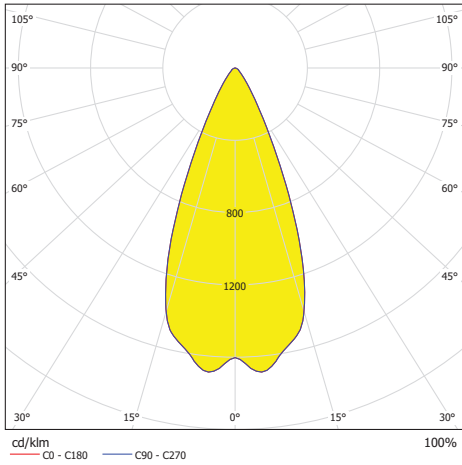
Height of Room: 2.800 m  
 Ground area: 25.00 m<sup>2</sup>



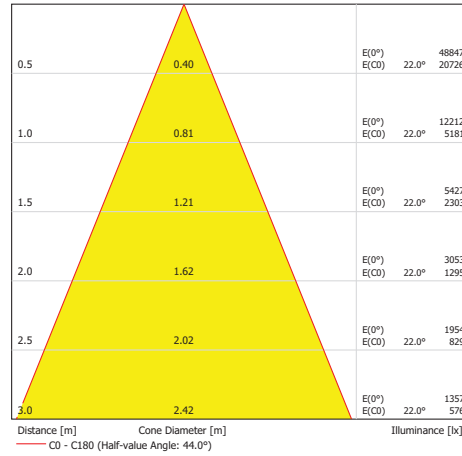
Total Luminous Flux: 7717 lm  
 Total Load: 263.0 W  
 Maintenance factor: 0.80  
 Boundary Zone: 0.000 m

Surface	Rho [%]	from ( [m]   [m] )	towards ( [m]   [m] )	Length [m]
Floor	20	/	/	/
Ceiling	70	/	/	/
Wall 1	50	( 0.000   0.000 )	( 5.000   0.000 )	5.000
Wall 2	50	( 5.000   0.000 )	( 5.000   5.000 )	5.000
Wall 3	50	( 5.000   5.000 )	( 0.000   5.000 )	5.000
Wall 4	50	( 0.000   5.000 )	( 0.000   0.000 )	5.000

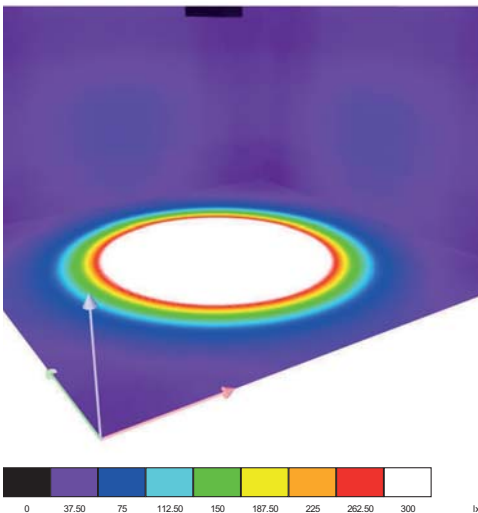
LDC Polar



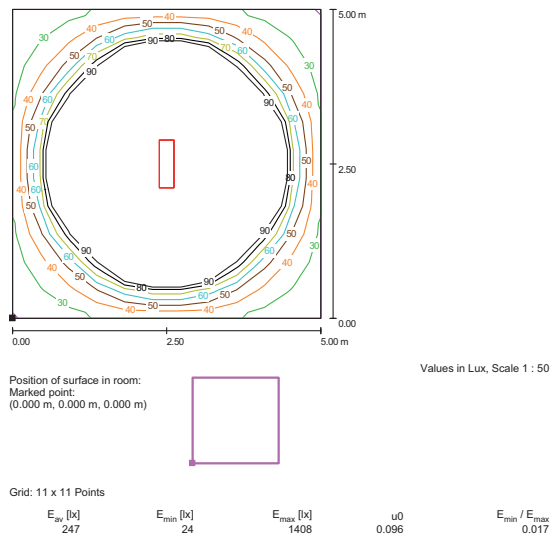
Cone Diagram



Colour Rendering

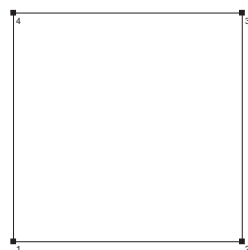


Floor Isolines (E)



Room Details

Height of working plane: 0.850 m  
 Boundary Zone: 0.000 m  
 Maintenance factor: 0.80  
 Height of Room: 2.800 m  
 Ground area: 25.00 m²



Total Luminous Flux: 7619 lm  
 Total Load: 263.0 W  
 Maintenance factor: 0.80  
 Boundary Zone: 0.000 m

Surface	Rho [%]	from ( [m]   [m] )	towards ( [m]   [m] )	Length [m]
Floor	20	/	/	/
Ceiling	70	/	/	/
Wall 1	50	( 0.000   0.000 )	( 5.000   0.000 )	5.000
Wall 2	50	( 5.000   0.000 )	( 5.000   5.000 )	5.000
Wall 3	50	( 5.000   5.000 )	( 0.000   5.000 )	5.000
Wall 4	50	( 0.000   5.000 )	( 0.000   0.000 )	5.000

### PRODUCT SPECIFICATION CHART:

1006 0444	RGBCW	14°x26°
1006 0443	RGBCW	23°
1006 0442	RGBCW	44°
1006 0441	RGBCW	10°
1006 2036	RGBCW	9°/14°x26°
1006 2034	RGBCW	9°/23°
1006 2096 (EPS)	RGBCW	10°

### ACCESSORIES:

1098 0081	Barn Door Module (2 pcs)
1098 0087	Top Hat (2 pcs)
1098 0088	Half Top Hat (2 pcs)

Other variants available on request