

# ArcSource Inground 12 RGB™



The Anolis ArcSource Inground range brings the ArcSource range to the world of exterior lighting. Industry standard Inground fittings with an IP67 Rating, complete with Drive over loadings.

## TECHNICAL SPECIFICATIONS:

Power Supply Required: See Below Listing  
 Max Power Consumption: 13.6W  
 Available Beam Angles: See Pg 4  
 Impact Rating: IK 07  
 Ingress Protection Rating: IP67  
 Light Source: High Power LED's  
 LED Life Expectancy: Min 50000 Hrs  
 Typical Lumen Maintenance: 70% @ 50000 hrs

Construction: Stainless Steel, Plastics Housing  
 Product Weight: 2kg  
 Operating Ambient Temp Range: -20°C/+40°C  
 Operating Temp: +60°C @ Ambient +40°C  
 LED Colour Variants: See Pg 4  
 Cooling System: Convection  
 Cable Type: Chogori 08BMMA-SL8001 (Male)

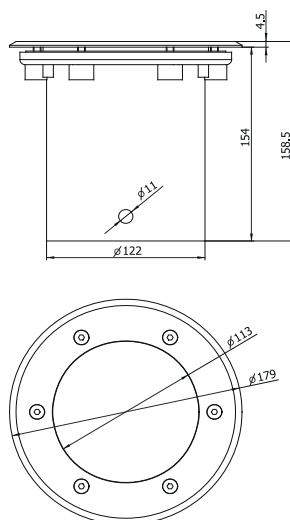
For further information regarding optical systems please visit the website: [www.anolis.eu](http://www.anolis.eu)

## Accessories:

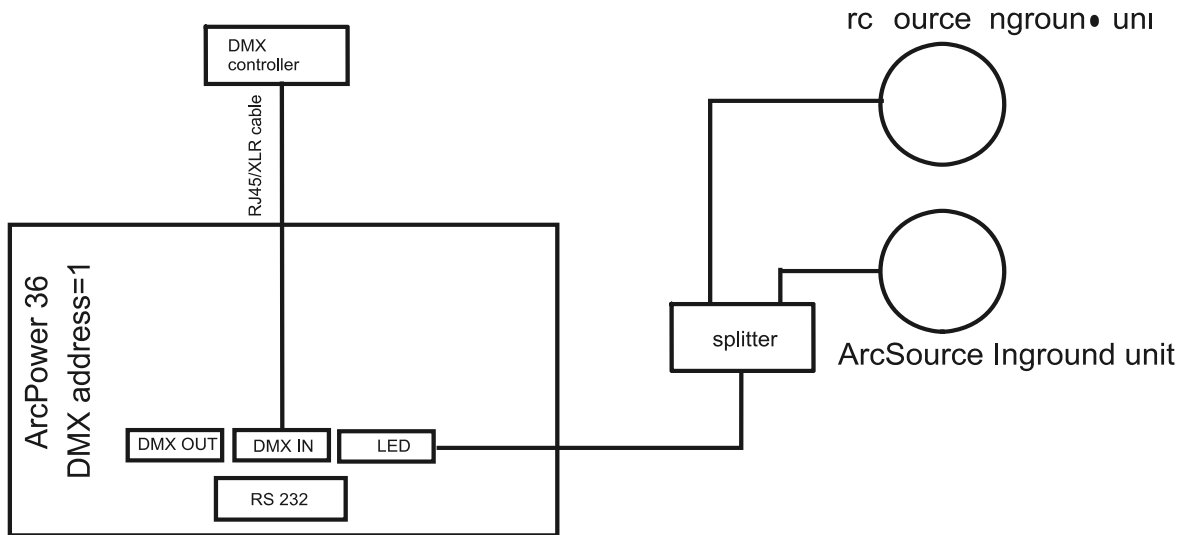
## Compatible Drivers:

ArcPower 36, 72, 144, 360, RM384

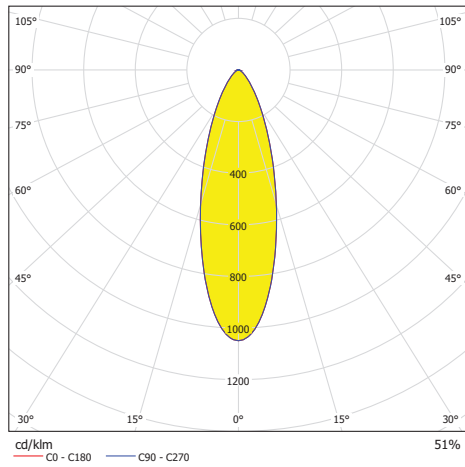
## DIMENSIONAL DRAWINGS:



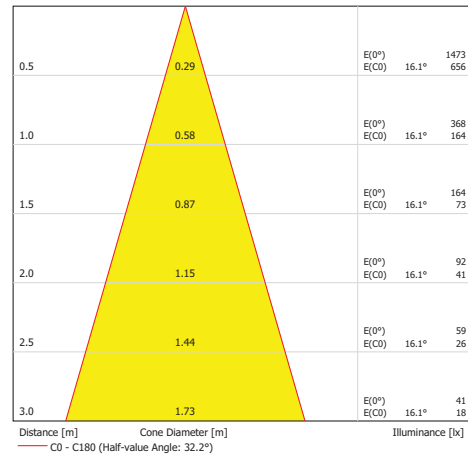
CONNECTION SCHEME:



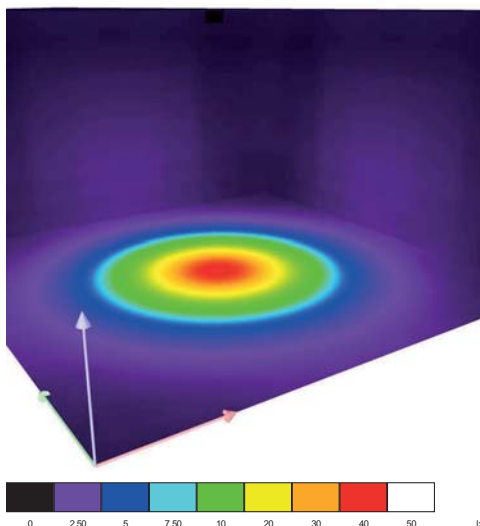
### LDC Polar



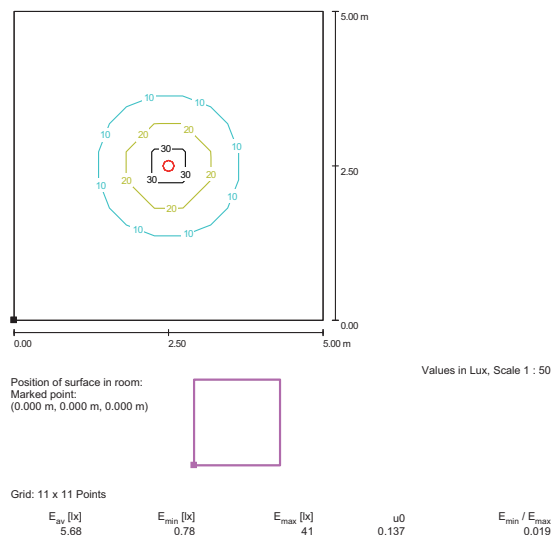
### Cone Diagram



### Colour Rendering



### Floor Isolines (E)

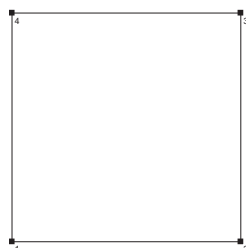


### Room Details

Height of working plane: 0.850 m  
 Boundary Zone: 0.000 m

Maintenance factor: 0.80

Height of Room: 2.800 m  
 Ground area: 25.00 m<sup>2</sup>



Total Luminous Flux: 351 lm  
 Total Load: 18.0 W  
 Maintenance factor: 0.80  
 Boundary Zone: 0.000 m

Surface	Rho [%]	from ( [m]   [m] )	towards ( [m]   [m] )	Length [m]
Floor	20	/	/	/
Ceiling	70	/	/	/
Wall 1	50	( 0.000   0.000 )	( 5.000   0.000 )	5.000
Wall 2	50	( 5.000   0.000 )	( 5.000   5.000 )	5.000
Wall 3	50	( 5.000   5.000 )	( 0.000   5.000 )	5.000
Wall 4	50	( 0.000   5.000 )	( 0.000   0.000 )	5.000

## PRODUCT SPECIFICATION CHART:

## ACCESSORIES:

1006 0649	B	25°
1006 6646	B	6°
1006 5644	CW	15°
1006 0644	CW	32°
1006 7642	CW	38°
1006 5645	CW	6°
1006 5649	CWRGB	15°
1006 5642	CWRGB	32°
1006 7645	CWRGB	38°
1006 5650	CWRGB	6°
1006 0650	G	32°
1006 8641	NW	6°
1006 0642	RGB	15°
1006 0641	RGB	32°
1006 7641	RGB	38°
1006 0643	RGB	6°
1006 0647	SW	32°
1006 ,0645	WW	32°
1006 7643	WW	38°
1006 5643	WW	6°
1006 5647	WWRGB	15°
1006 0646	WWRGB	32°

Other variants available on request