

# PRODUCT NEWS



## Divine™ 160 RGBW

### TECHNICAL SPECIFICATION

Input Voltage	100-277V AC 50/60 Hz
Typical Power Consumption	440W@230V
Light Source	40x Multi Chip LEDs
Colour Variants	RGBCW (W-6500K), RGBNW (W-3000K, 4000K), PW (2800K, 3100K, 3400K, 4000K, 5000K), SW (2700-7100K)
Beam Angle	Red/Green/Blue/White, PureWhite, SmartWhite RGBW: 15°, 23°, 40° PW, SW: 13°, 24°, 40°
IP Rating	IP67 /Suitable For Wet Locations

## Divine™ 60 UV

### TECHNICAL SPECIFICATION

Input Voltage	100-277V AC 50/60 Hz
Typical Power Consumption	160W @ 230V
Light Source	60x UV LEDs
Wave Length	365nm
Beam Angle	11°, 24°, 38°
Power Supply	Integral
IP Rating	IP67 /Suitable For Wet Locations



# PRODUCT NEWS



ANOLIS is an architectural division of ROBE

**HQ Et Factory:** Anolis, Hážovice 2090, 756 61 Rožnov pod Radhoštěm, Czech Republic, Tel.: +420 571 751 500, Fax: +420 571 626 337, Email: info@anolis.eu  
**America:** Anolis Lighting, 12349 SW 53rd Street, Suite 202, Cooper City, Florida 33330, USA, Tel.: 1-844-426-6547, Email: info@anolislighting.com  
**UK:** Anolis UK, 3 Spinney View, Stone Circle Road, Round Spinney Industrial Estate, NN3 8RF, Northampton, United Kingdom, Tel.: 01604 741000, Email: info@anolis.co.uk  
**France:** Anolis France | ZI Paris Nord 2 | Bâtiment Euler | 33, rue des Vanesses | 93420 Villepinte | Tel.: +33 1 48 63 84 81 | Fax: +33 1 48 63 84 87 | E-mail: info@robelighting.fr  
**Asia and Pacific:** Anolis Asia Pacific, 12 New Industrial Road, #02-05 Morningstar Centre, S-536202, Singapore, Tel.: +65 6280 8558, Email: asiapacific@anolis.eu  
**Middle East:** Anolis Middle East, Al Asmawi Building DIP, Office Nbr 507 5th floor, Po Box: 391 898, Dubai, UAE, Tel.: +971 4 885 3223, Email: middleeast@anolis.eu

All specifications subject to change without notice.  
January 2017

anolis.eu | anolislighting.com

Leading Lighting Solutions





## ArcPower™ 70 DRS ArcPower™ 200 DRS ArcPower™ 600 DRS

### TECHNICAL SPECIFICATION

Input Voltage	100-277V AC 50/60 Hz
Typical Power Consumption	80W / 220W / 660W @ 230V, +/-10%
Max Output Current	350mA, 700mA (or Custom) Per Colour
Fixing Method	Din Rail Lock
Operating Temperature Range	0° / +50°C (+32°F / +122°F)

## ArcControl™ DRS

### TECHNICAL SPECIFICATION

Input Voltage	48V (US version: 30V)
Interface Protocol	USITT DMX512, ArtNet
Operation Modes	DMX, Stand-Alone
Display	Graphic Touch Display (50x40mm / 1.97x1.57 inch)
Number of LED Output Zones	Max. 16 (1 Zone Part of ArcControl DRS + Up To 15 ArcZone Modules)
DMX Connection	Terminal Block In/Out (Screw, 3-Wire)
ArtNet Connection	RJ45
5V And 12V Connection	Terminal Block (Screw)



## ArcSource™ 140 COB Recessed

### TECHNICAL SPECIFICATION

Input Voltage	48V
Typical Power Consumption	140W (US: 100W), +/-10%
Light Source	130W COB LED
Colour Variants	PW 2700, 3000, 4000, 6000K
Beam Angle	23°, 36° (+ Optional Diffusers)
Lumen Output (Delivered)	7072lm (2700K @ 23°) 8127lm (6000K @ 23°)
CRI	96 (2700K), 93 (3000K), 80 (4000K), 82 (6000K)
Projected Lumen Maintenance	60,000 hrs (L70@ 25°C / 77°F)



## ArcSource™ 24MC Recessed

### TECHNICAL SPECIFICATION

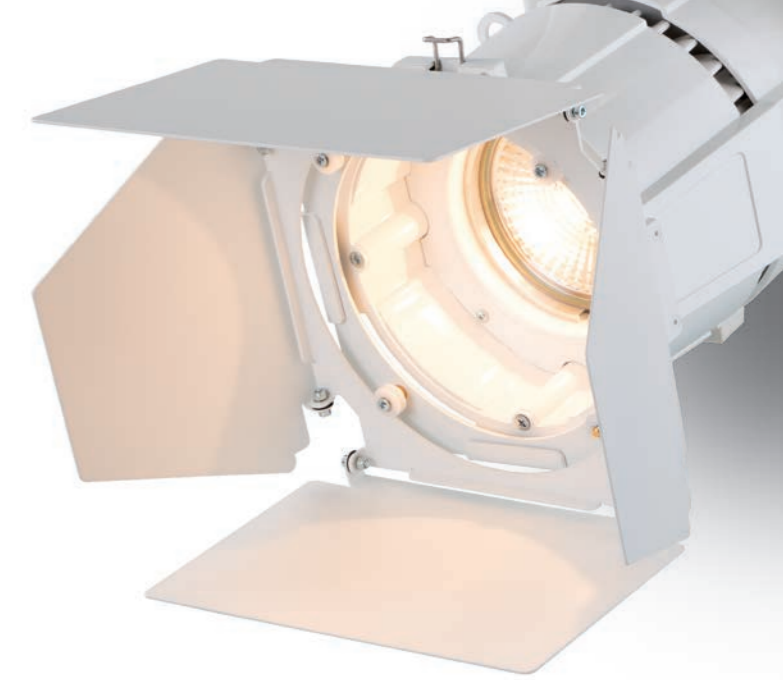
Input Voltage	48V
Typical Power Consumption	28W at 350mA, 36W at 500mA
Light Source	6x 15W Multi-Chip LEDs
Colour Variants	RGBW (W: CW-6500K, NW-4000K), PW (Standard 3000K, 6500K; Optional 2700K, 3500K, 4000K, 5000K, 5700K)
Beam Angle	22°, 38°
Lumen Output (Delivered)	1403lm (RGBCW at 38°, 350mA)



## ArcSource™ Outdoor 16MC / Integral

### TECHNICAL SPECIFICATION

Input Voltage	48V
Typical Power Consumption	36W +/-10%
Light Source	4 x 15W Multi-Chip LEDs
Colour Variants	R6BCW (CW-6300K), PW (6300K), SW (2700-7100K)
Beam Angle	7°, 24°, 34°, 7°x42°, 42°x7°
Projected Lumen Maintenance	50,000 hrs (L70@ 25°C / 77°F)
IP Rating	IP67
Integrated power supply version available.	



## ArcZone™ DRS

### TECHNICAL SPECIFICATION

Input Voltage	48V (US version: 30V)
Control System	ArcControl DRS
Maximum Load Per Zone	48x 3W LEDs (max. 12 LEDs per Colour) 12x Multichip LEDs RGBW (CE ver.)
LED Output Connection	Terminal Block and RJ45



## Ambiance™ RGBW

### TECHNICAL SPECIFICATION

Input Voltage	24V
Typical Power Consumption	50W
Max. Input Current	500mA (Per Channel)
Light Source	24 x High Power Single Chip LEDs
Colour Variants	RGBW Red/Green/Blue/CoolWhite
Beam Angle (w/anti-glare ring)	63°, 80°
Lumen Output (Delivered)	1507 lm (RGBW at 63°, with anti-glare ring) 1364 lm (RGBW at 80°, with anti-glare ring)
Control System	DMX512, DALI



## Ambiance™ TW

### TECHNICAL SPECIFICATION

Input Voltage	24V
Typical Power Consumption	50W
Max. Input Current	500mA (Per Channel)
Light Source	30x High Power Single Chip LEDs
Colour Variants	TW (Tunable White) With Red Shift
Beam Angle (w/anti-glare ring)	63°, 80°
Projected Lumen Maintenance	50,000 hrs (L70@ 25°C / 77°F)
Control System	DMX512, DALI
Power Supply	ArcPower CLG-60-24 MW or Third Party 60W/24V Power Supply



## ArcLine™ DVP 600/ 900/ 1200 Integral

### TECHNICAL SPECIFICATION

Input Voltage	100-277V AC 50/60 Hz
Typical Power Consumption	20W / 30W / 40W, +/-5%
Light Source	24x (600mm), 36x (900mm), 48x (1200mm) Mid Power RGB Multi-Chip LEDs
Colour Variants	RGB
Beam Angle	Non-Optic, Approx. 120° (Without Diffuser)
Lumen Output (Without Diffuser)	336lm (600mm), 504lm (900mm), 672lm (1200mm)
IP Rating	IP66

ArcLine DVP With Optional Frosted Diffuser (Pictured)



## ArcPar™ S1 / ArcPar™ SB1

### TECHNICAL SPECIFICATION

Input Voltage	100-240V, 50/60 Hz
Typical Power Consumption	150W @ 230V, +/-5%
Light Source	130W COB LED
Colour Variants	PW 2700, 3000, 4000, 6000K
Beam Angle	23° (28° with Diffuser), Optional Diffusers
Lumen Output (Delivered)	7072lm (2700K @ 23°), 8127lm (6000K @ 23°)
CRI	96 (2700K), 93 (3000K), 80 (4000K), 82 (6000K)
Projected Lumen Maintenance	60,000 hrs (L70@ 25°C / 77°F)
Setting/Control	S1: 2-Row LCD Display & 4 Buttons, Optional Wireless CRMX SB1: Jog Dial & Button, Manual Dimmer 0-100%