

# PRODUCT NEWS



## Divine™ 160 RGBW

### TECHNICAL SPECIFICATION

Input Voltage	100-277V AC 50/60 Hz
Typical Power Consumption	440W@230V
Light Source	40x Multi Chip LEDs
Colour Variants	RGBCW (W-6500K), RGBNW (W-4000K), RGBWW (W-3200K), PW (2700K, 4000K, 6500K), SW (2700-6500K)
Beam Angle	Red/Green/Blue/White, PureWhite, SmartWhite
Protection Factor	RGBW: 15°, 23°, 40° PW, SW: 13°, 24°, 40° IP67 / Suitable For Wet Locations

## Divine™ 60 UV

### TECHNICAL SPECIFICATION

Input Voltage	100-277V AC 50/60 Hz
Typical Power Consumption	180W @ 230V
Light Source	60x UV LEDs
Wave Length	365nm
Beam Angle	38°
Power Supply	Integral
Protection Factor	IP67 / Suitable For Wet Locations



# PRODUCT NEWS



ANOLIS is an architectural division of ROBE

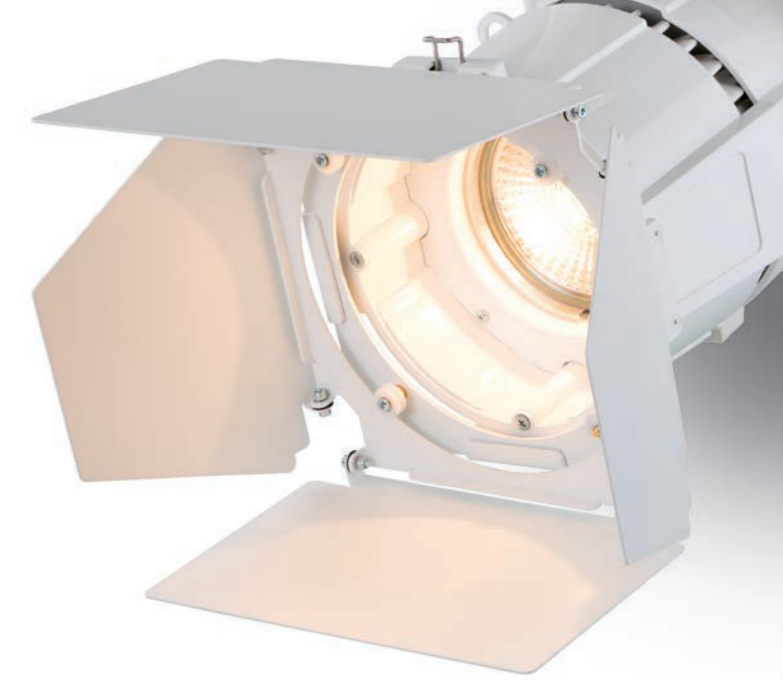
**HQ Et Factory:** Anolis, Hážovice 2090, 756 61 Rožnov pod Radhoštěm, Czech Republic, Tel.: +420 571 751 500, Fax: +420 571 626 337, Email: info@anolis.eu  
**America:** Anolis Lighting, 12349 SW 53rd Street, Suite 202, Cooper City, Florida 33330, USA, Tel.: 1-844-426-6547, Email: info@anolislighting.com  
**UK:** Anolis UK, 3 Spinney View, Stone Circle Road, Round Spinney Industrial Estate, NN3 8RF, Northampton, United Kingdom, Tel.: 01604 741000, Email: info@anolis.co.uk  
**France:** Anolis France | ZI Paris Nord 2 | Bâtiment Euler | 33, rue des Vanesses | 93420 Villepinte | Tel.: +33 1 48 63 84 81 | Fax: +33 1 48 63 84 87 | E-mail: info@robelighting.fr  
**Asia and Pacific:** Anolis Asia Pacific, 12 New Industrial Road, #02-05 Morningstar Centre, S-536202, Singapore, Tel.: +65 6280 8558, Email: asiapacific@anolis.eu  
**Middle East:** Anolis Middle East, Al Asmawi Building DIP, Office Nbr 507 5th floor, Po Box: 391 898, Dubai, UAE, Tel.: +971 4 885 3223, Email: middleeast@anolis.eu

All specifications subject to change without notice.  
May 2017

anolislighting.com

Leading Lighting Solutions





## ArcPower™ 70 DRS ArcPower™ 200 DRS ArcPower™ 600 DRS

### TECHNICAL SPECIFICATION

Input Voltage 100-277V AC 50/60 Hz  
Typical Power Consumption 80W / 220W / 650W @ 230V, +/-10%  
Max Output Current 350mA, 700mA (or Custom) Per Colour  
Mounting Method Din Rail Lock  
Operating Temperature Range 0° / +50°C (+32°F / +122°F)

## ArcControl™ DRS, ArcControl™ DRS Pixel

### TECHNICAL SPECIFICATION

Input Voltage 48V (CE), 28V, 48V (US)  
Interface Protocol USITT DMX512, ArtNet, MANet, MANet2, sACN  
Operation Modes DMX, Stand-Alone  
Display Graphic Touch Display (50x40mm / 1.97x1.57 inch)  
Max. Number of Connected ArcZones:  
ArcControl DRS: 15x ArcZone DRS or 8x ArcZone DRS Pixel  
ArcControl DRS Pixel: 7x ArcZone DRS Pixel or 16x ArcZone Terminal Block (2x 3-Pin XLR)  
DRSDMX Connection RJ45  
ArtNet Connection RJ45  
Additional connections Trigger Input: Max. 5V DC (Terminal Block)  
Output For DMX Controller: 12V DC (Terminal Block)

## ArcSource™ 140 COB Recessed

### TECHNICAL SPECIFICATION

Input Voltage 48V  
Typical Power Consumption 150W (US: 100W), +/-10%  
Light Source 130W COB LED  
Colour Variants PW (2700, 3000, 4000, 6000K)  
Beam Angle 23°, 36° (+ Optional Diffusers)  
Lumen Output (Delivered) 7072lm (2700K @ 23°) -(CE)  
8127lm (6000K @ 23°) -(CE)  
96 (2700K), 93 (3000K), 80 (4000K), 82 (6000K)  
CRI  
Projected Lumen Maintenance 60,000 hrs (L70@ 25°C / 77°F)

## ArcSource™ 24MC Recessed

### TECHNICAL SPECIFICATION

Input Voltage 48V  
Typical Power Consumption 28W at 350mA, 36W at 500mA  
Light Source 6x 15W Multi-Chip LEDs  
Colour Variants RGBCW (W-6500K), RGBNW (W-4000K), RGBWW (W-3200K), PW (2700K, 4000K, 6500K), SW (2700-6500K)  
Beam Angle 22°, 30°, 38°, 62°  
Lumen Output (Delivered) 1403lm (RGBCW at 38°, 350mA)

## ArcSource™ Outdoor 16MC / Integral

### TECHNICAL SPECIFICATION

Input Voltage 48V, 120-277V AC 50/60Hz  
Typical Power Consumption 36W, 42W +/-10%  
Light Source 4 x 15W Multi-Chip LEDs  
Colour Variants RGBCW (CW-6300K), PW (6300K), SW (2700-7100K)  
Beam Angle 7°, 24°, 34°, 7°x42°, 42°x7°  
Projected Lumen Maintenance 60,000 hrs (L70@ 25°C / 77°F)  
Protection Factor IP67  
Integrated power supply version available.



## ArcZone™ DRS, ArcZone™ DRS Pixel

### TECHNICAL SPECIFICATION

Input Voltage 48V (CE), 28V, 48V (US)  
Control System ArcControl DRS, ArcControl DRS Pixel  
LED Output (ArcZone DRS) RJ45/Terminal Block (8-Pin)  
LED Output (ArcZone DRS Pixel) Terminal Blocks (3-Pin And 5-Pin)

## Ambiance™ RGBW

### TECHNICAL SPECIFICATION

Input Voltage 24V  
Typical Power Consumption 40W  
Light Source 24 x High Power Single Chip LEDs  
Colour Variants RGBW (W=6500K)  
Red/Green/Blue/CoolWhite  
Beam Angle (w/anti-glare ring) 63°, 80°  
Lumen Output (Delivered) 1507 lm (RGBW at 63°, with anti-glare ring)  
1364 lm (RGBW at 80°, with anti-glare ring)  
Control System DMX512, DALI

## Ambiance™ TD, TW, PW

### TECHNICAL SPECIFICATION

Input Voltage 24V  
Typical Power Consumption 40W  
Light Source 30x High Power Single Chip LEDs  
Colour Variants TW (Tunable White), TD (Tungsten Dimming), PW (Pure White)  
Beam Angle (w/anti-glare ring) 63°, 80°  
Projected Lumen Maintenance 50,000 hrs (L70@ 25°C / 77°F)  
Control System DMX512, DALI, 0-10V (TD, PW)  
Power Supply ArcPower CLG-60-24 MW or Third Party  
60W/24V Power Supply

## ArcLine™ DVP 600/ 900/ 1200 Integral

### TECHNICAL SPECIFICATION

Input Voltage 100-277V AC 50/60 Hz  
Typical Power Consumption 21W (600mm), 32W (900mm), 42W (1200mm), +/-10%  
Light Source 24x (600mm), 36x (900mm), 48x (1200mm) Mid Power RGB Multi-Chip LEDs  
Colour Variants RGB  
Beam Angle Non-Optic, Approx. 120° (Without Diffuser)  
Lumen Output (Without Diffuser) 336lm (600mm), 504lm (900mm), 672lm (1200mm)  
Protection Factor IP66 / Suitable for wet location

## ArcPar™ S1 / ArcPar™ SB1

### TECHNICAL SPECIFICATION

Input Voltage 100-240V, 50/60 Hz, 100-277V, 50/60 Hz (US version - SB1)  
Typical Power Consumption 150W @ 230V, +/-5%  
Light Source 130W COB LED  
Colour Variants PW 2700, 6000K  
Beam Angle 23° (28° with Diffuser), Optional Diffusers  
Lumen Output (Delivered) 7072lm (2700K @ 23°), 8127lm (6000K @ 23°)  
CRI 96 (2700K), 82 (6000K)  
Projected Lumen Maintenance 60,000 hrs (L70@ 25°C / 77°F)  
Setting/Control S1: 2-Row LCD Display & 4 Buttons, Optional Wireless CRMX  
SB1: Jog Dial & Button, Manual Dimmer 0-100%